

ENABLE CLEAR COMMUNICATION

Equip your middle schoolers to apply their developing skills in writing and grammar so they can communicate clearly, precisely, and powerfully. Writing & Grammar 6 integrates both writing and grammar instruction, applying relevant grammar concepts in writing chapters and providing Writing Workshop lessons within grammar chapters. The student worktext includes elements from both the elementary and secondary product lines, serving as a natural on-ramp for your middle schoolers. Students will be able to apply English grammar to produce written and oral communication, create and refine several types of texts, and increase in 21st century skills—all grounded in a focused biblical worldview.

Materials

Student Worktext

Students will continue learning and applying writing and grammar skills sequentially, using them in frequent writing opportunities across both guided and independent practice. Writing Workshop lessons support short writing activities in grammar chapters alongside full-length writing assignments in writing chapters. Learning targets, writing rubrics, and Writer’s Notebook activities have all been added to the student worktext for this edition.

Teacher Edition

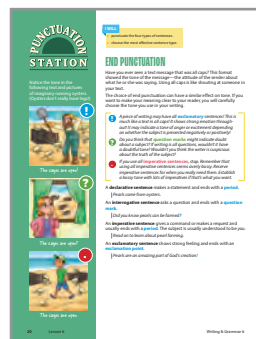
The teacher edition provides a wealth of resources to educators, including a variety of teaching strategies that bring instruction to life. This edition implements the teaching cycle, updates instruction on digital literacy and internet research, adds study skills throughout, and provides QR codes for AfterSchoolHelp.com. Additionally, many new resources have been added in BJU Press Trove™.

Assessments & Assessment Answer Keys

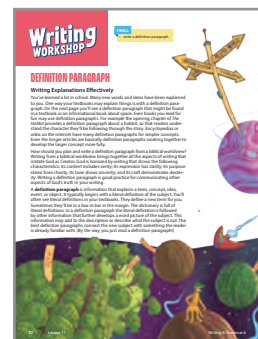
Eight chapter tests are included for this course, along with preassessments, concept reinforcements, and a final exam. Writing Rubrics are also included for reference. Answers to the student assessments are available as well.



Punctuation Station



Writer’s Notebook



How We Teach It

Holistic Integration

Grammar and writing are intrinsically linked, so instruction in the two is integrated yet structured. Sequential grammar instruction contains short Writing Workshop activities, while extended writing chapters contain Punctuation Station lessons to reinforce relevant grammar concepts.

Varied Instruction

Differentiated instruction is present throughout the course. Through the Writer’s Notebook, collaborative learning, frequent writing opportunities, modeling, writing conferences, and more, students will experience multifaceted learning.

Biblical Worldview Shaping

Students have numerous opportunities to apply critical-thinking skills and make personal applications on how five worldview themes—verity, clarity, charity, sincerity, and dexterity—exist in and affect listening, speaking, and writing.

Practice, Review, Use

The worktext follows a cycle of Practice the Skill, Review the Skill, and Use the Skill, which reinforces learning. Other strategies complement the approach: essential questions keep students grounded, while cross-disciplinary lessons apply grammar skills to writing and vice versa.

